

Young Lin Gas Analyzer

The Young Lin Gas Analyzer efficiently detects and quantifies various gaseous products in a sample. The system uses a porous layer open tubular (PLOT) column, which is a different setup from columns used to separate constituents of liquid samples. This system can also rapidly analyze light hydrocarbon and permanent gases such as O_2 , or N_2 at one time.



[Applications]

- Measure the purity of gas
- For use with TOGA(Transformer Oil Gas Analysis)
- Analysis of Light Hydrocarbon





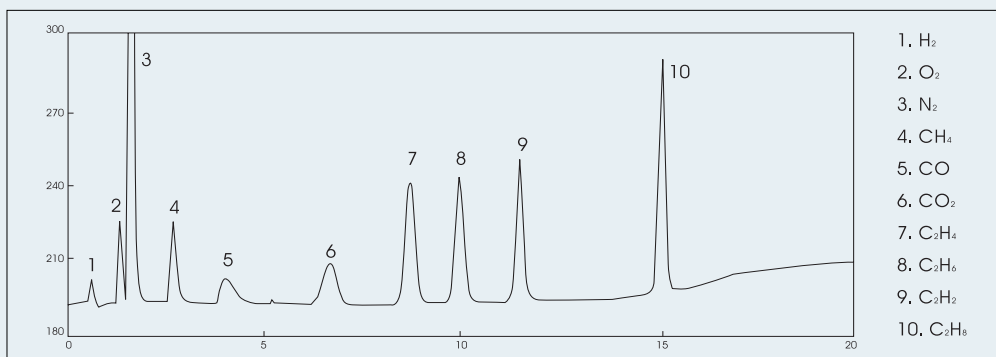
Our customized analysis system is organized depending on the purpose of analysis and customer's request. It also delivers applications with an automatic analysis process and simple data handling for customer's convenience.

Young Lin Gas Analyzer

Features

- One-stop shopping for entire solutions from essential consumables to standard gases
- Monitoring of up to 10 different targeted gases simultaneously within a single analysis
- Analysis of all targeted combustible gases with only one carrier gas
- Significantly improved reproducibility of results with an automatic valve and sample loop
- Minimized costs with optimized Analytical procedures
- Capillary column is also available depending on targeted sample and your requirement
- Methanizer available that can convert carbon monoxide gas into Methane to increase sensitivity of detection

Analysis of Standard sample gas



1. H₂
2. O₂
3. N₂
4. CH₄
5. CO
6. CO₂
7. C₂H₄
8. C₂H₆
9. C₃H₈
10. C₃H₆

Analysis Condition Table

Column	Porapak N, 1/8" X 10ft, 60/80 mesh	C ₂ H ₂ , C ₂ H ₂ , C ₂ H ₂ , C ₃ H ₆ (C ₃ H ₈), CO ₂
	Molecular sieve 13X, 1/8", 3ft, 60/80 mesh	H ₂ , O ₂ , N ₂ , CH ₄ , CO
Gases	Carrier gas : Ultrapure Ar	15 ml/min (Valve 1 On, OFF)
	Air	300 ml/min
	H ₂	30 ml/min
Temperature	Column Oven	35 °C (for 5 min) → 15 °C/min (temperature programming) → 175 °C (for 10 min)
	Packed column injection port	200 °C
	Methanizer	350 °C
	Thermal Conductivity Detector(TCD)	200 °C
	Flame Ionization Detector(FID)	250 °C
	Gas Sampling Valve(GSV 1)	120 °C
Automatic Valve	Initial	GSV 1 Off, GSV 2 Off
	Conversion	0.1 min GSV 1 On, 7 min GSV 2 On
Signal	APC mode	
Conversion	AT-2000 control version	4.0 min (TCD → FID)

