



## Subject : Analysis of Sucrose , Glucose and Fructose

### ► Analysis Condition

Column : Styrene/DVB-Based strong cation-exchange resin(8\*300mm)

Detector : RI- Range 1, 45°C

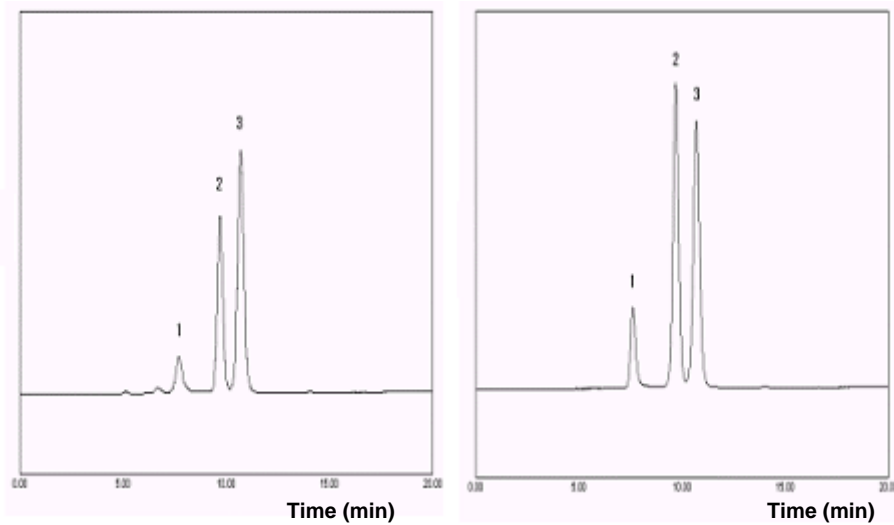
Injection Volume : 20 $\mu$ l

Mobile Phase : Water 100%

Flow Rate : 0.7ml/min

Oven Temperature : 75°C

### ► Chromatogram



### ► Peak Lists

- 1) Sucrose
- 2) Glucose
- 3) Fructose

