

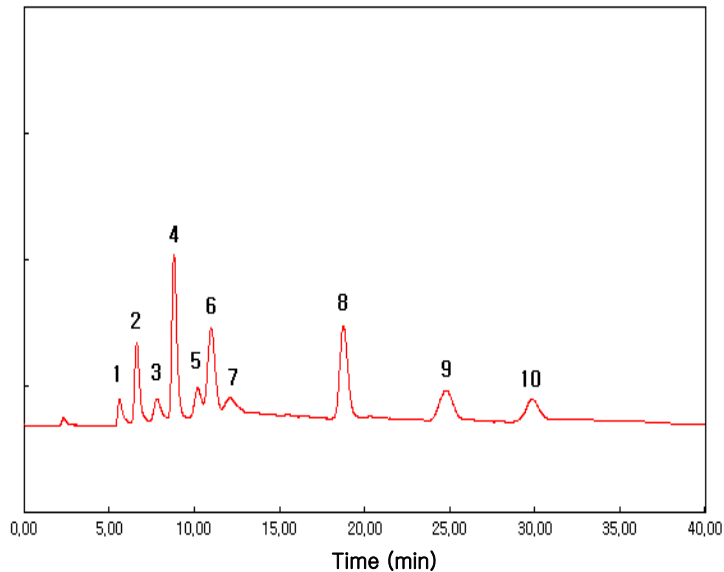


## Subject : Analysis of Carbohydrate Mixture

### ► Analysis Condition

Column : Carbohydrate (4.6\*250mm)  
 Detector : ELSD-Range 1/2, gas 1.5L/min, Temp 55 °C  
 Injection Volume : 20  $\mu$ l  
 Mobile Phase : Acetonitrile : Water = 80 :20  
 Flow Rate : 1.5ml/min  
 Column Oven : 35 °C

### ► Chromatogram



### ► Peak Lists

- |                   |                   |
|-------------------|-------------------|
| 1) D(-) Ribose    | 6) D(+) Glucose   |
| 2) D(+) Xylose    | 7) D(+) Galactose |
| 3) D(-) Arabinose | 8) Sucrose        |
| 4) D(-) Fructose  | 9) Maltose        |
| 5) D(+) Mannose   | 10) Lactose       |

