

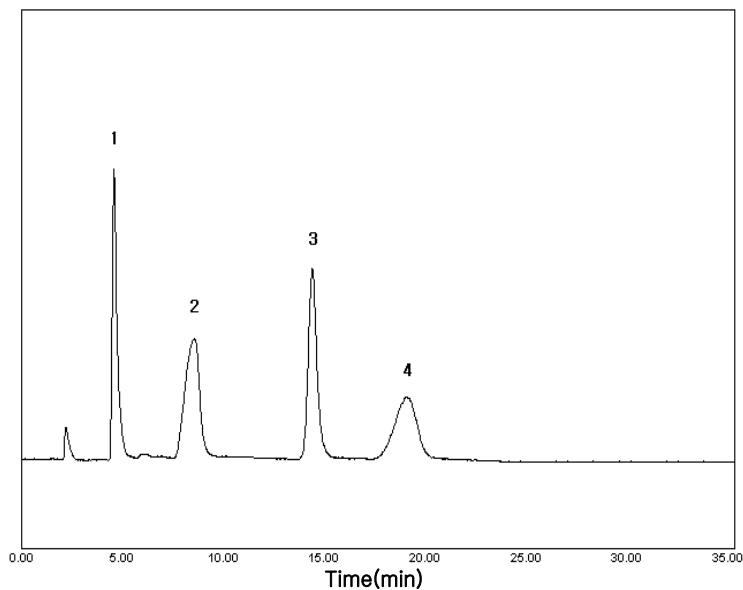


Subject : Analysis of Ribose, Glucose, Sucrose and Lactose

► Analysis Condition

Column : Carbohydrate (4.6*250mm)
Detector : ELSD-Range 1/4, gas 2L/min, Temp 60 °C
Injection Volume : 20 μ l
Mobile Phase : Acetonitrile : Water = 80 :20
Flow Rate : 1.5ml/min
Column Oven : 35 °C

► Chromatogram



► Peak Lists

- 1) Ribose
- 2) Glucose
- 3) Sucrose
- 4) Lactose

