

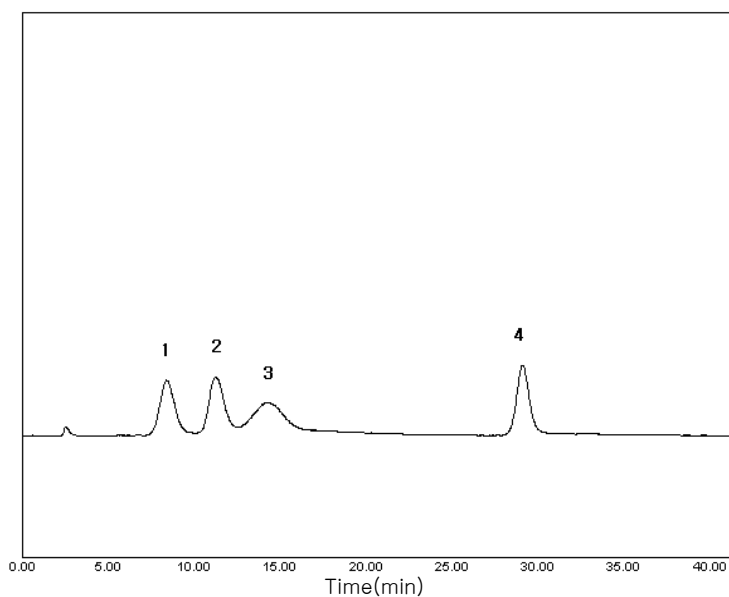


Subject : Analysis of Arabinose, Mannose, Galactose and Sucrose

► Analysis Condition

Column : Carbohydrate (4.6*250mm)
Detector : ELSD-Range 1/4, gas 2L/min, Temp 60 °C
Injection Volume : 20 μ l
Mobile Phase : Acetonitrile : Water = 85 :15
Flow Rate : 1.5ml/min
Column Oven : 35 °C

► Chromatogram



► Peak Lists

- 1) Arabinose
- 2) Mannose
- 3) Galactose
- 4) Sucrose

