



## APPLICATION NOTE

### Subject : Analysis of Polyethylene by a Pyrolysis System

#### ▶ Analysis condition

Oven temperature : 40.0C(5 min) à 20.0 °C/min à 250.0 °C(2 min)

Injection Port 1: Capillary; 250°C, He flow rate=3.0 mL,

Split ratio=20.0: Constant flow rate

Column 1 : 30.0 m x 0.32 mm x 0.25 um

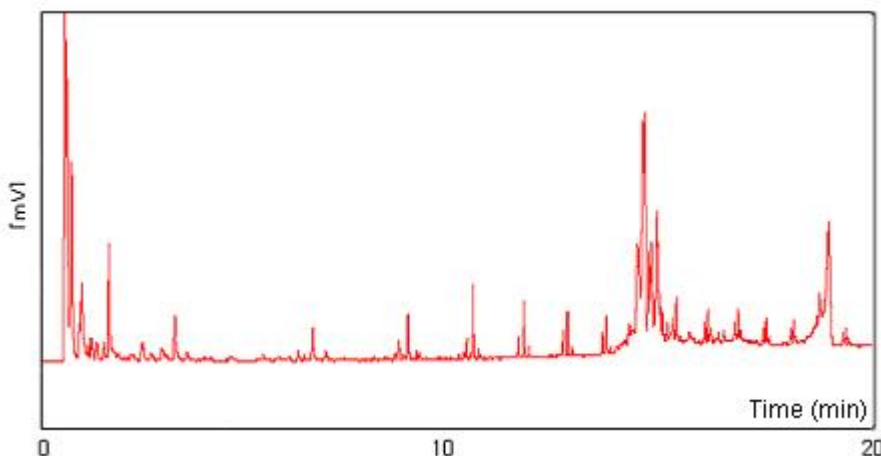
Detector 1 : FID, 250°C

#### ▶ Pyrolysis condition ( Pyroprobe 5000, Interface 1500 )

Probe : 200 °C (1 sec) à 900 °C (3 sec ) (Total: 6 sec)

Interface : 150->160

#### ▶ Analysis chromatogram



영린기기

431-836 경기도 안양시 동안구 호계2동 899-6 Tel : 031-428-8700 Fax : 031-428-8787  
Homepage : [www.younglin.com](http://www.younglin.com) E-mail : [sales@younglin.com](mailto:sales@younglin.com)