

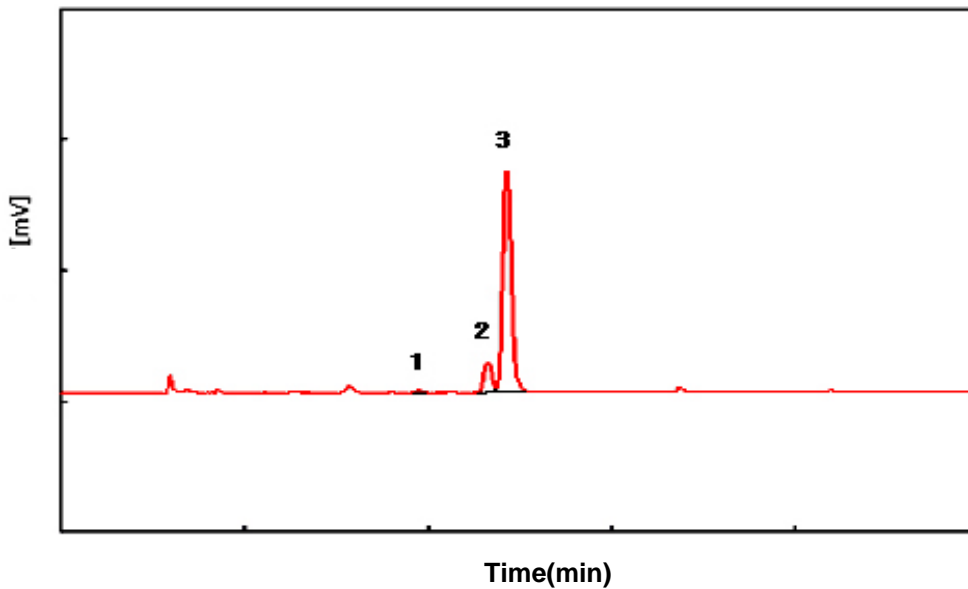


Subject : Analysis of residual solvents in medicine -Chloromethane, Methanol, Ethanol

► Analysis Condition

Oven : 35°C (5 min)- 10°C/min – 200°C (10 min)
Column : HP-INNOWAX (30m*0.53mm*1.0um)
Carrier gas : He, 5.0 ml/min (Split ratio 5:1)
Injector : Capillary 250°C
Detector : FID 250°C
Headspace : 80°C (60 min Heating), Gas 1ml Injection

► Chromatogram



► Peak Lists

- 1) CH₂Cl₂
- 2) MeOH
- 3) EtOH

