



APPLICATION NOTE

Subject : Analysis of residuals among the drugs(Direct injection)

▶ Analysis condition

Oven : 40.0C(20 min) → 5.0 °C/min → 90.0 °C(10min)

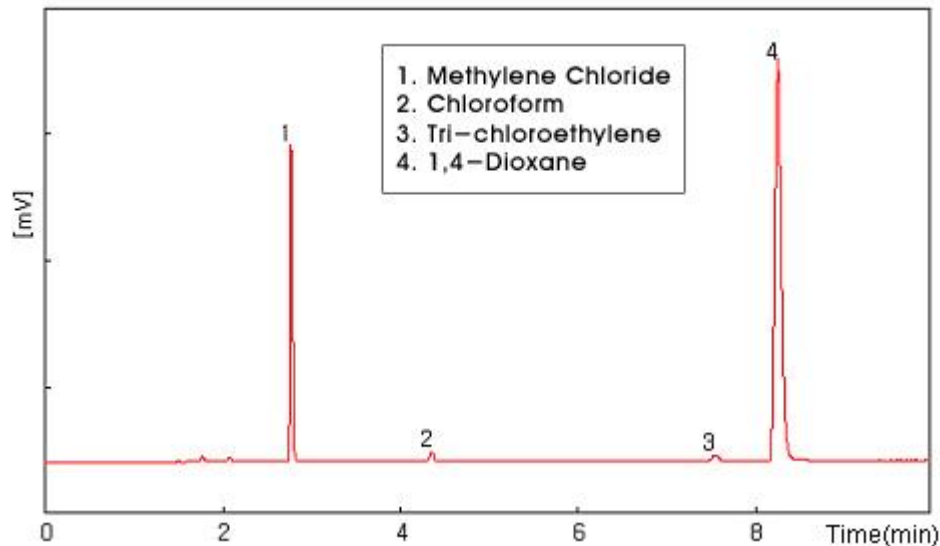
Injection Port 1 : Capillary; 230°C, He flow rate=2.0 mL,

Split ratio=10.0; Constant flow

Column 1 : HP-5(30m*0.32mm*1.0um)

Detector 1 : FID, 250°C

▶ Chromatogram



영린기기

431-836 경기도 안양시 동안구 호계2동 899-6 Tel : 031-428-8700 Fax : 031-428-8787
Homepage : www.younglin.com E-mail : sales@younglin.com