



APPLICATION NOTE

**Subject : Residual materials
among the extracted pigments from food.**

▶ Analysis condition

Oven : 35.0C(8 min) → 5.0 °C/min → 150.0 °C(1min)

Injection port 1 :

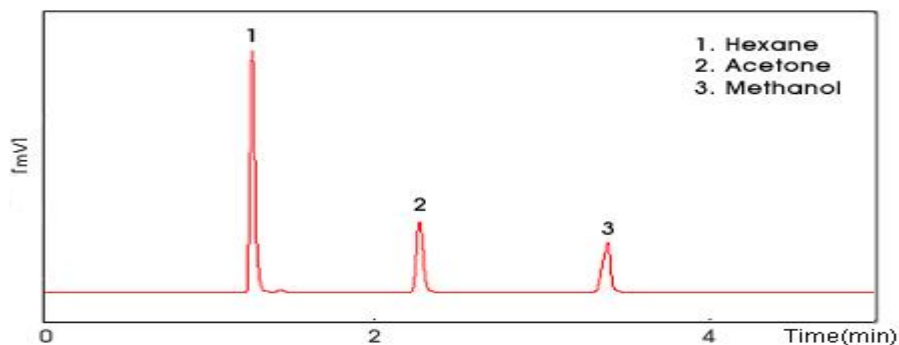
Capillary; 230°C, He flow rate=3.0 mL,

Split ratio=10.0; constant flow

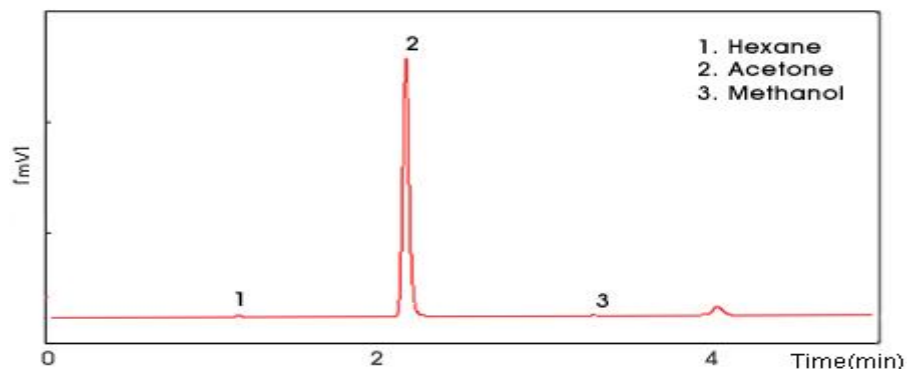
Column 1 : HP-INNOWAX(30m*0.32mm*0.5um)

Detector 1 : FID, 250°C

▶ Chromatogram



<Fig.1>Standard sample Chromatogram



<Fig.2>Sample Chromatogram



영린기기

431-836 경기도 안양시 동안구 호계2동 899-6 Tel : 031-428-8700 Fax : 031-428-8787
Homepage : www.younglin.com E-mail : sales@younglin.com